



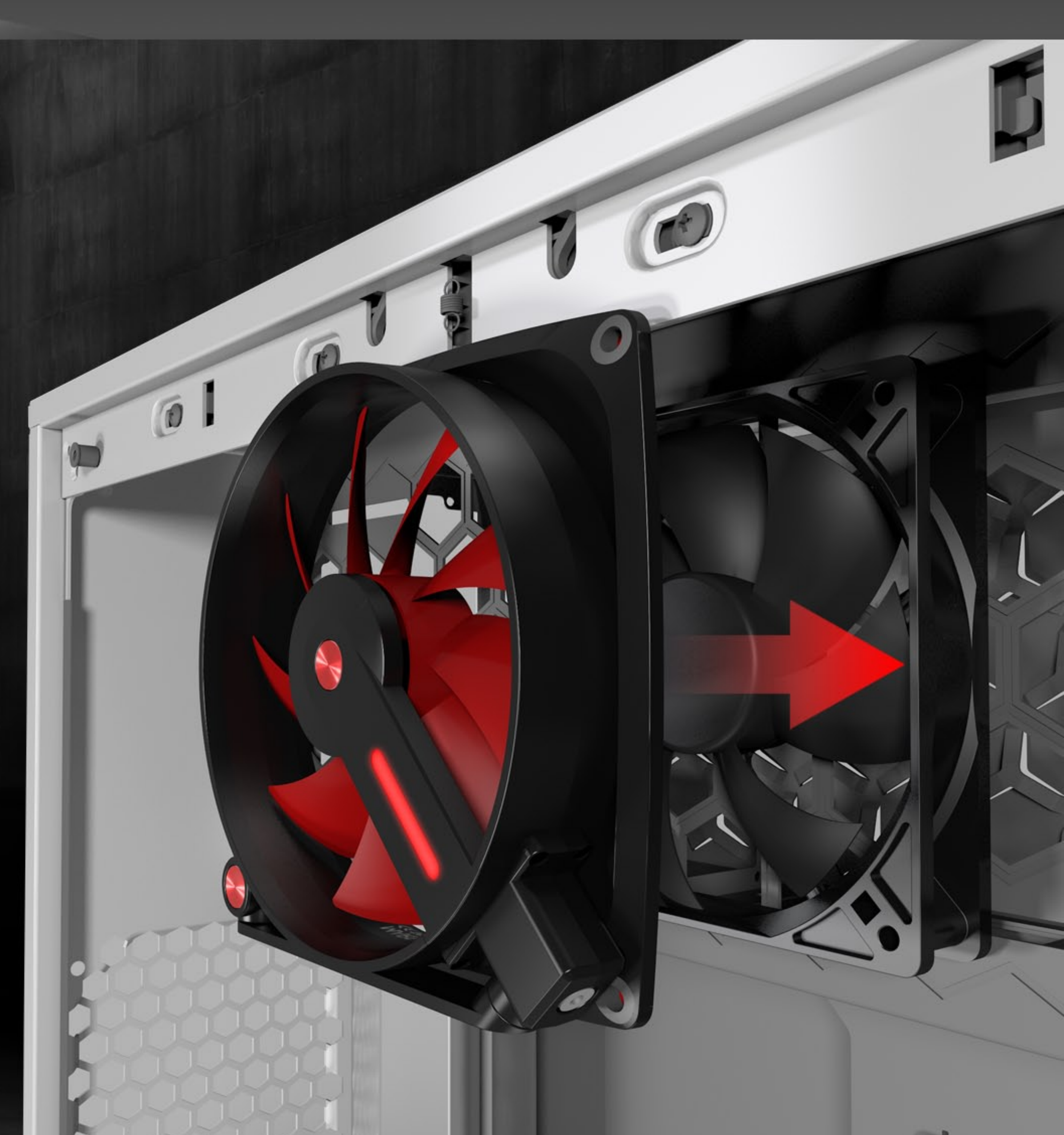
MARS

Multi-Function Case Fan



Innovative Transformer Design

The fan arm possesses three rotating hinges, which allows you to adjust its position and angle for cooling any specific area you want or hard to reach areas.



Double Fans, Double Efficiency

MARS can be mounted on a regular case fan or radiator to upgrade your thermal performance. MARS isn't just a new product, but also an all new experience to the case fan industry.

Please use provided MARS fan screws for installation and the installations above is a suggestion.



Modular Connector Design

A 2.5mm fan connector has two headers which can link more than one fan to the motherboard while reducing cable clutter. This design provides tidier cable management easier installation and the opportunity to add more case fans.

Versatile Cooling Functions

MARS can also be used as a normal desktop fan to cool yourself when gaming intensifies. The provided 2.5mm USB connector can transfer the power voltage from 5V to 12V, and hosts a switch for easier and convenient operation while using it outside of your chassis.

* The 2.5mm USB connector is designed specifically for MARS and is not compatible with other related products



Premium Quality and Durable Exterior

MARS's frame is made of lightweight aluminium for a strong structure and aesthetically pleasing design. Rubber shockproof stands eliminate unwanted vibrations.

Double Ball Bearing Case Fan

The double ball bearing has better, stronger structure which extends the life expectancy, and increases the efficiency of MARS fan.



Specifications

Model Name	MARS
Part Number	Black/Red MARSFAN-1PK-RED Black MARSFAN-1PK-BLA
Color	Black/Red, Black
Fan Size	120 x 120 x 25 mm
Material	Aluminium, PC
Starting Voltage	5V
Rated Voltage	DC 12V
Rated Power	0.96W
Rated Current	0.08A
Speed Mode (PWM)	600~1400±200 R.P.M
Air Flow	38.73 CFM (65.8 m3/h)
Air Pressure	0.69 mm/ H2O (6.8 Pa)
Fan Connector	4-Pin Modular
Noise Level	25 dB (A)
Bearing Type	Double Ball Bearing
Life expectation	50000 hrs/ 40°C
Warranty	5 years
Net Weight	220g
Package Dimension (W x L x H)	139 x 183.5 x 29 mm (5.4" x 7.2" x 1.1")

* Specifications may vary based on different regions

